

# GPS-

© bash.org

0.

gps- GPS-

Pioneer Avic S2 10.000

Bluetooth

• MP3-

iGo,

1.

Garmin Nuvi 205 8.000

63

noname

MIO, Orion

TomTom, Nec, Pioneer,  
Shivaki.  
"GPS"

500.000-



01.03.2009:

Garmin		63	38
		34	27
iGo 2006	teleAtlas	26	9
	teleAtlas	26	9
City Guide	-	32	6
JJ-connect +	JJ-Group " "	16	-
TomTom	TomTom	2	-
iGo 8		-	-

**Garmin,** - .

### 3. GPS-

- Garmin - : ( ; ) - .
- Windows Mobile Palm OS, Symbian' - :  
[Garmin Mobile XT](#), - \_\_\_\_\_ - Garmin.
- ?

### 4. PNA?

**PNA (Personal Navigation Assistant)** - .. **Windows CE!** Pioneer' , MIO, JJ-Connect' -

- \_\_\_\_\_
- \_\_\_\_\_ WinCE
- \_\_\_\_\_ pna

5.

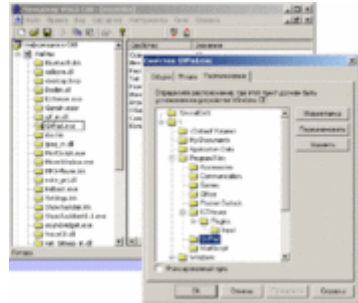
( Pioneer)

reset"

[autorun.exe](#),

mnavdce.cab.

SD-  
reset'



[Manager.](#)

WinCE.

. Cab -  
cab-

[Win CE CAB](#)



Windows XP.

6.

WinCE

- [regedit](#) -
- [cecmd.exe](#) - Total Commander WinCE
- [jotkbd.exe](#) -
- [movewindow.exe](#) -
- [resinfo.exe](#) -
- [port splitter.exe](#) -
- [MortScript.exe](#) -

gps-

**WinCE.**

.bat

DOS,

**WinCE**

: [utils.zip](#).

SD-

7.

pna

- JJ-Connect'
- Shivaki
- iGo Pioneer'

PNA  
WinCE

- 1 :
- 2 :
- 3 :

pna

"reset"

8.

exe-  
\_\_\_\_\_).

SD-

usb-

Microsoft ActiveSync.

SD-

exe-

- \SDMMC\Navitel\Navitel.exe
- \SDMMC\MobileNavigator\MobileNavigator.exe

**MobileNavigator1.exe.**  
**MobileNavigator.exe.**

exe-

cecmd.exe,

"1":

Total Commander WinCE.

9.



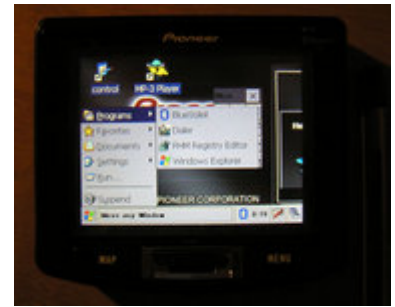
resinfo.exe -

System.

- WinCE 5.00.0

- ARM926T
- 320x240

- MALATA\_GPS



explorer.exe. ? WINDOWS  
TaskbarShow.exe

[Utils.zip.](#)

### 10. **Garmin Mobile XT**

Exe-

[Garmin Mobile XT -](#)

Garmin.  
Windows Mobile, Symbian Palm - WinCE.

Garmin Mobile XT WinCE.

WinCE Windows Mobile

- [GarminMobXTWinCE.zip](#)
- [GarminMobileXTforWindowsCE\\_50010w.rar](#)
- [GarminMobileXTforWindowsCE\\_50020w.7z](#)

GarminMobileXTforWindowsCE\_50020w.7z, WinCE 5.00.20 -  
GarminMobileXTforWindowsCE\_50010w.rar

### 11. **Garmin**

Garmin Mobile XT WinCE  
MortScript

Que.exe.

Garmin.mscr

- 1) **Garmin Mobile XT**

```
If(WndExists("Garmin Mobile XT"))
  Show("Garmin Mobile XT")
Exit
```

EndIf

- 2) **explorer.exe** ( violation at data address 0xFFFFFFFF" - GMXT explorer.exe, garmin' "Read access :

```
If(not ProcExists("explorer.exe"))
  Run("\windows\explorer.exe")
Sleep(400)
```

EndIf

- 3) explorer.exe garmin' TaskbarHide.exe

[Utils.zip:](#)

```
Run(SystemPath("ScriptPath")\TaskbarHide.exe")
```

```
Sleep(500)
```

```
Run(SystemPath("ScriptPath")\TaskbarHide.exe")
```

- 4) GMXT SD- SD-

```
XCopy(SystemPath("ScriptPath")\Settings\*.*", "\Garmin", TRUE)
```

- 5) **Garmin Mobile XT**

RunWait(SystemPath("ScriptPath")\..\Apps\WM\que.exe")

• 6) XCopy("\Garmin\\*.\*", SystemPath("ScriptPath")\Settings, TRUE)

SD- :

• 7) Run(SystemPath("ScriptPath")\TaskbarShow.exe)

explorer'

• 8) explorer.exe -  
If(ProcExists("explorer.exe"))  
Kill("explorer.exe")  
EndIf

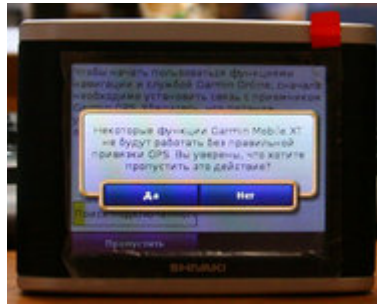
toolhelp.dll" -

toolhelp.dll

[Utils.zip](#).

"ProcExist' requires

## 12. Garmin Mobile XT



GMXT

Garmin GPS".

GPS-

Garmin

- 3/4

ID

(

10

).

" -> "

Garmin.

1.5.

Unit ID

ID

Garmin Mobile XT.

Garmin Mobile XT

Garmin

"

"

Software Product -

Generate.

( Garmin) GPS-

sw.unl



Map Product

5.xx"

FID=1280,

OK.

Generate.

Garmin

gmapsupp.unl

## 13.

Garmin Mobile XT.

garmin

GarminMobileXTFreeBasemap\_4xxxx.exe.

GMXT WinCE  
Voice) -

Garmin Mobile XT (  
GarminMobileXTSupportFiles\_4xxxx.exe.

5.11"

.img  
map\_updater\_5\_11.exe,

490

Garmin  
gmapsupp.img,

5.12 5.13

gmapsupp.img 5.11

GMapTool,

- - 
  - 
  - 
  -
- Write gmapsupp.img. Insert unlock code  
gmapsupp.unl.  
write all  
gmapsupp.img Garmin

map\_updater\_5\_12.exe

5.12,

map\_updater\_5\_13.exe -

5.13.

Garmin.

#### 14. garmin gps-

pna-

GMXT

WinCE

GPS-

COM-

GPS-  
Port Splitter,

COM-

GPS-

COM- : COM1..COM9.  
GMXT - garmin.mschr.

Port Splitter.exe

Port Splitter:

- -
- 1.30 1.20

settings.dat (

01.01.2007)

1.20,

Voxtel'

Shivaki

COM-

Port Splitter -

GPS-

COM7.

COM-

9600

COM0.



GMXT

GPS-

Port Splitter.exe.

Settings.dat.

"Exit".

Settings.bak.

garmin.mschr

3) 4)

```
Copy(SystemPath("ScriptPath")\Settings.bak", SystemPath("ScriptPath")\Settings.dat", TRUE)
If(not ProcExists("Port Splitter.exe"))
  Run(SystemPath("ScriptPath")\Port Splitter.exe")
  Sleep(500)
EndIf
```

15.

garmin.mscr - GMXT,  
( )

" -> " " -> ( )  
, .1. , , "

- GMXT. [runme.zip](#), cecmd.exe  
• runme.mscr - MortScript  
• MortScript.exe - MortScript  
• runme.exe - .exe-



8). exe- Navitel.exe Navitel SD- ( runme.exe  
runme.mscr Navitel.exe Navitel.mscr

Navitel.mscr:

```
Errorlevel("warn")
RunWait(SystemPath("ScriptPath")\..\Garmin\RunGMXT\Garmin.mscr")
```

GMXT.

16.

? GMXT Pioneer, Voxel Shivaki - \_\_\_\_\_ : !

? :)

- Shivaki ( , ) - \_\_\_\_\_ (43 ).

" , .. Garmin Mobile XT "

[Alfessa.net](#)

« » ( \_\_\_\_\_ ).

(Стас Корниенко ( [stcorn](#) ) )

....